

BENINCA®

TECHNOLOGY TO OPEN



standard sliding doors

LUCE LIGHT

The Luce Light sliding doors are the ideal solution for automated pedestrian access points in private and public locations: offices, shops and commercial businesses in general. Fast and easy to install, with continuous operation, they offer top performance and reliability. Available in single-leaf (up to 150 kg) or double-leaf (up to 80+80 kg) versions.



LUCE LIGHT

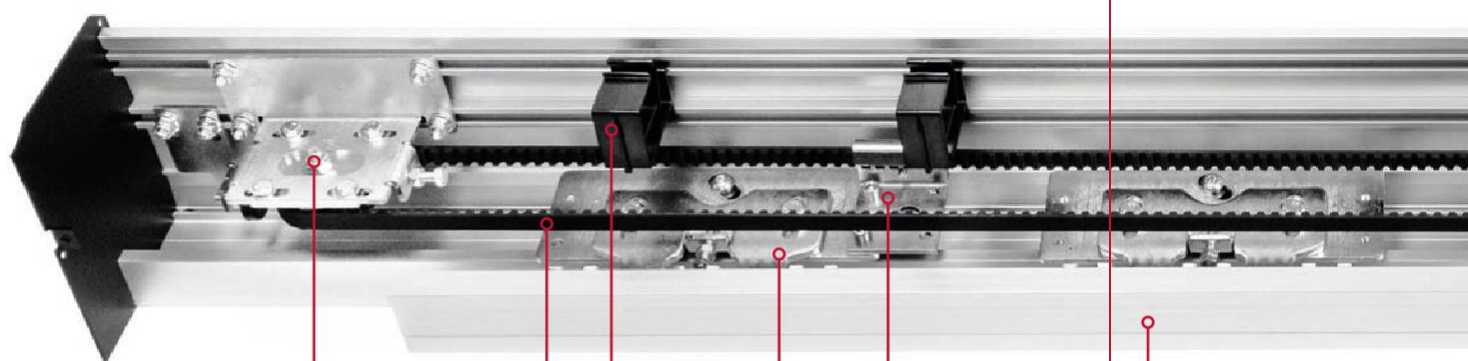


download LUCE LIGHT
instructions
and certificates

www.beninca.vn

Operator for sliding doors with three-wheeled carriages, which ensures that the doors are very stable and easy to adjust, both in height and depth.

The operator has a control unit with LED alphanumeric display, full-range switching power supply (100 -240 V 50/60 Hz) and battery charger. The presence of a USB connector makes it simple and quick to update the firmware as well as to copy parameters and operating logics to a new system instantly. Continuous operation guaranteed.



belt
return

toothed
belt

cable
guide

three-wheeled
sliding
carriage

belt
attachment

standard leaf
fastening device
(not included)

technical data

power supply	full range 100÷240 Vac 50/60 Hz
power consumption	70 W
power consumption in stand-by	3 W
accessories power supply	24 Vdc = / 1 A max
maximum speed 1 door	0.8 m/s
maximum speed 2 doors	1.6 m/s
maximum load 1 door	150 kg
maximum load 2 doors	80 + 80 kg
type and frequency of use	continuous operation = 100%
operating temperature	-15°C / +50°C
protection degree	IP20
data backup memory	USB flash drive



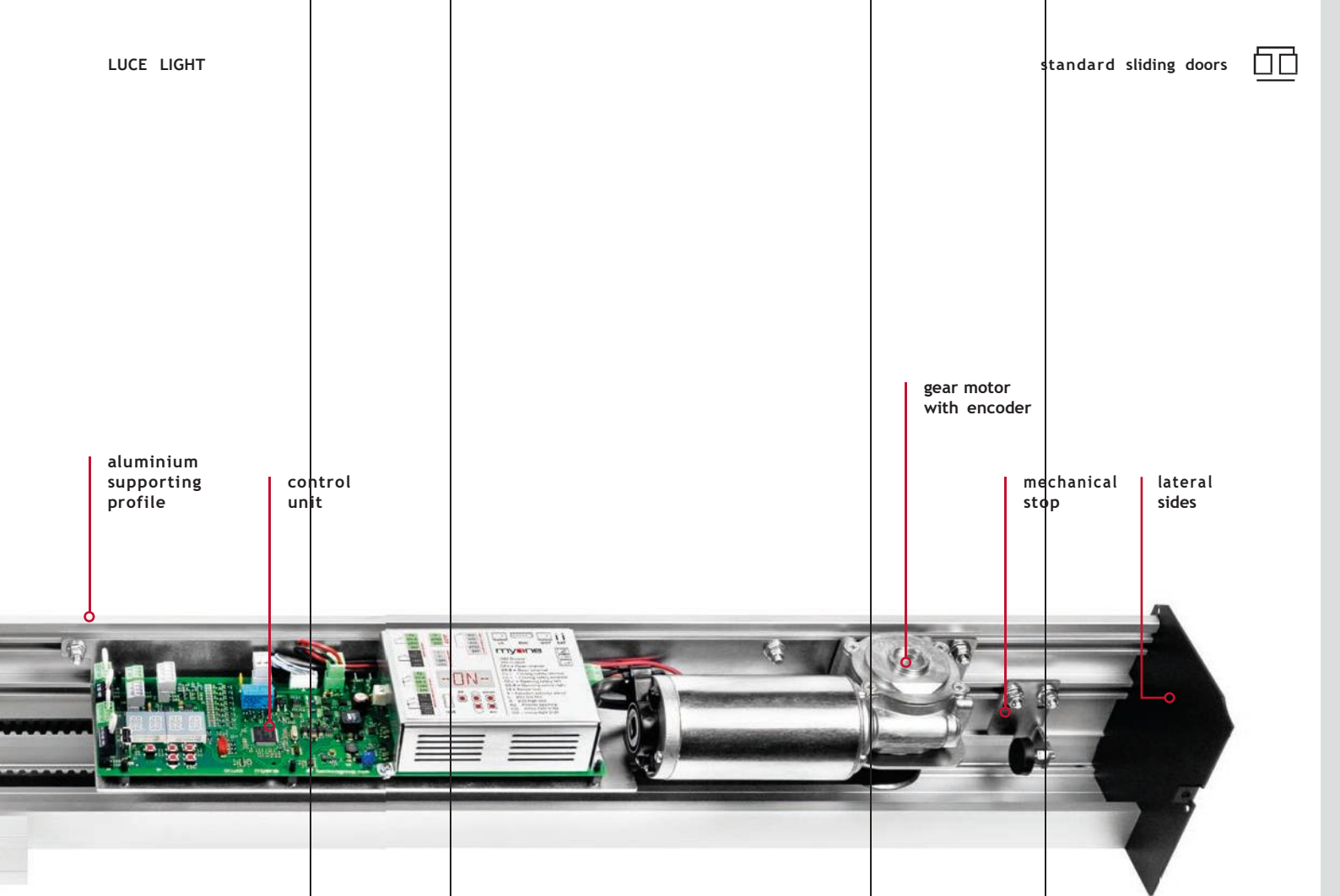
1 leaf
max. weight
150 kg



2 leaves
max. weight
80 + 80 kg

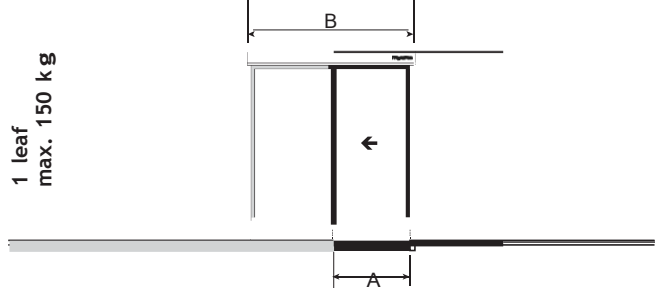
LUCE LIGHT

standard sliding doors

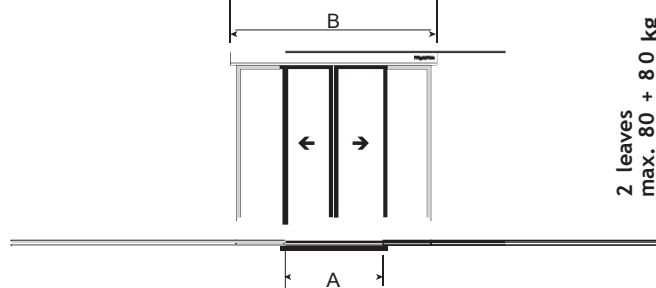


preassembled sliding doors

*The values of the passage size (A) and of the leaf are indicative and include an overlap of around 50 mm.



1 leaf
max. 150 kg



2 leaves
max. 80 + 80 kg

	A	B
LUCEL1901	900 mm	1900 mm
LUCEL2101	1000 mm	2100 mm
LUCEL2501	1200 mm	2500 mm
LUCEL2901	1400 mm	2900 mm
LUCEL3301	1600 mm	3300 mm
LUCEL3701	1800 mm	3700 mm
LUCEL4201	2000 mm	4200 mm
LUCEL5001	2450 mm	5000 mm
LUCEL6501	3100 mm	6500 mm

	A	B
LUCEL1902	900 mm	1900 mm
LUCEL2102	1000 mm	2100 mm
LUCEL2502	1200 mm	2500 mm
LUCEL2902	1400 mm	2900 mm
LUCEL3302	1600 mm	3300 mm
LUCEL3702	1800 mm	3700 mm
LUCEL4202	2000 mm	4200 mm
LUCEL5002	2450 mm	5000 mm
LUCEL6502	3100 mm	6500 mm

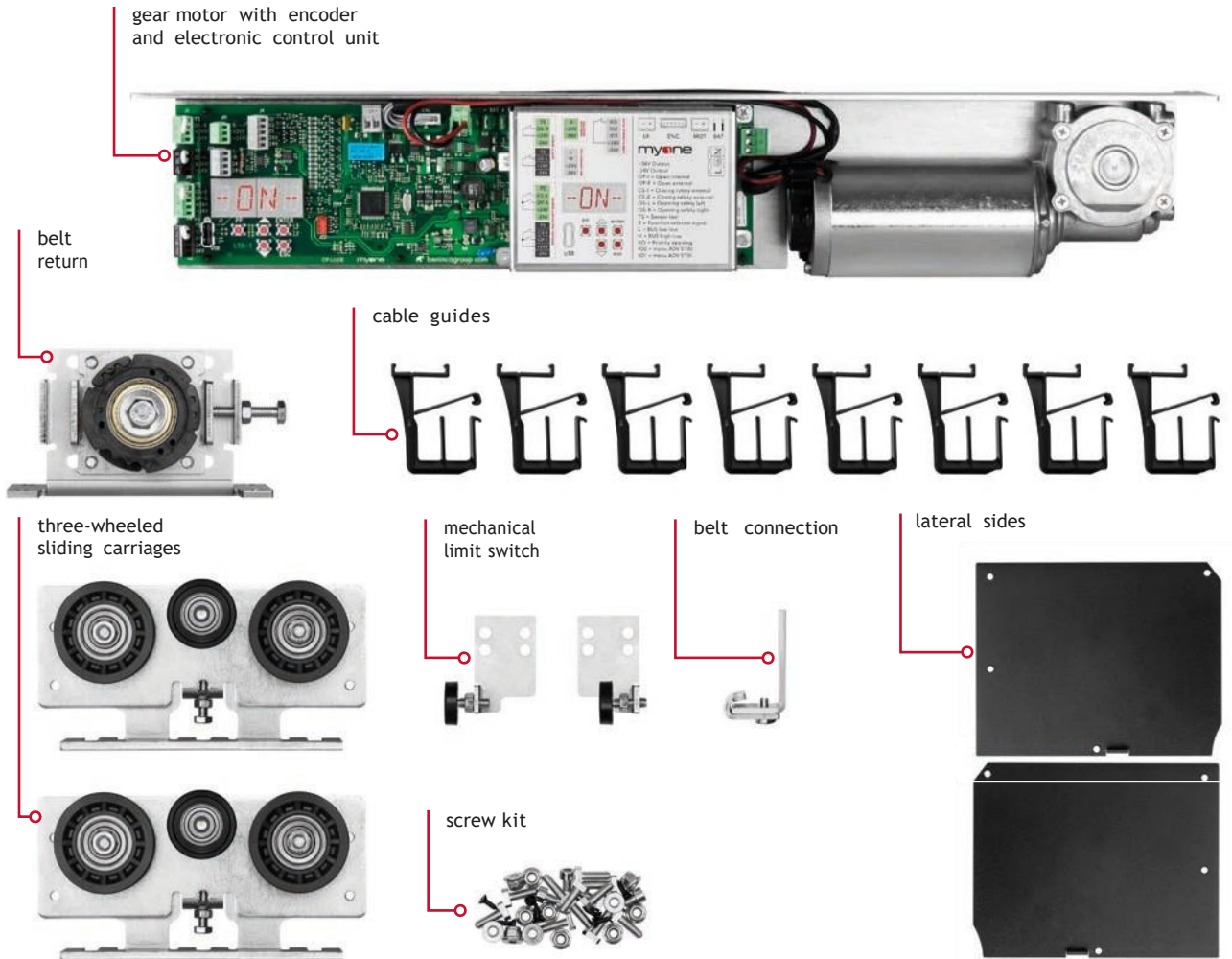
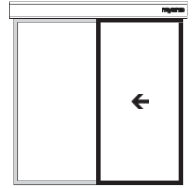
the preassembled operator is made up of:

control unit | gear motor with encoder | three-wheeled sliding carriages | supporting profile | anodised aluminium cover | belt return | mechanical stop | belt | cable guide | screw kit | lateral sides



kit for doors with one sliding leaf

LUCEH4201F LIGHT



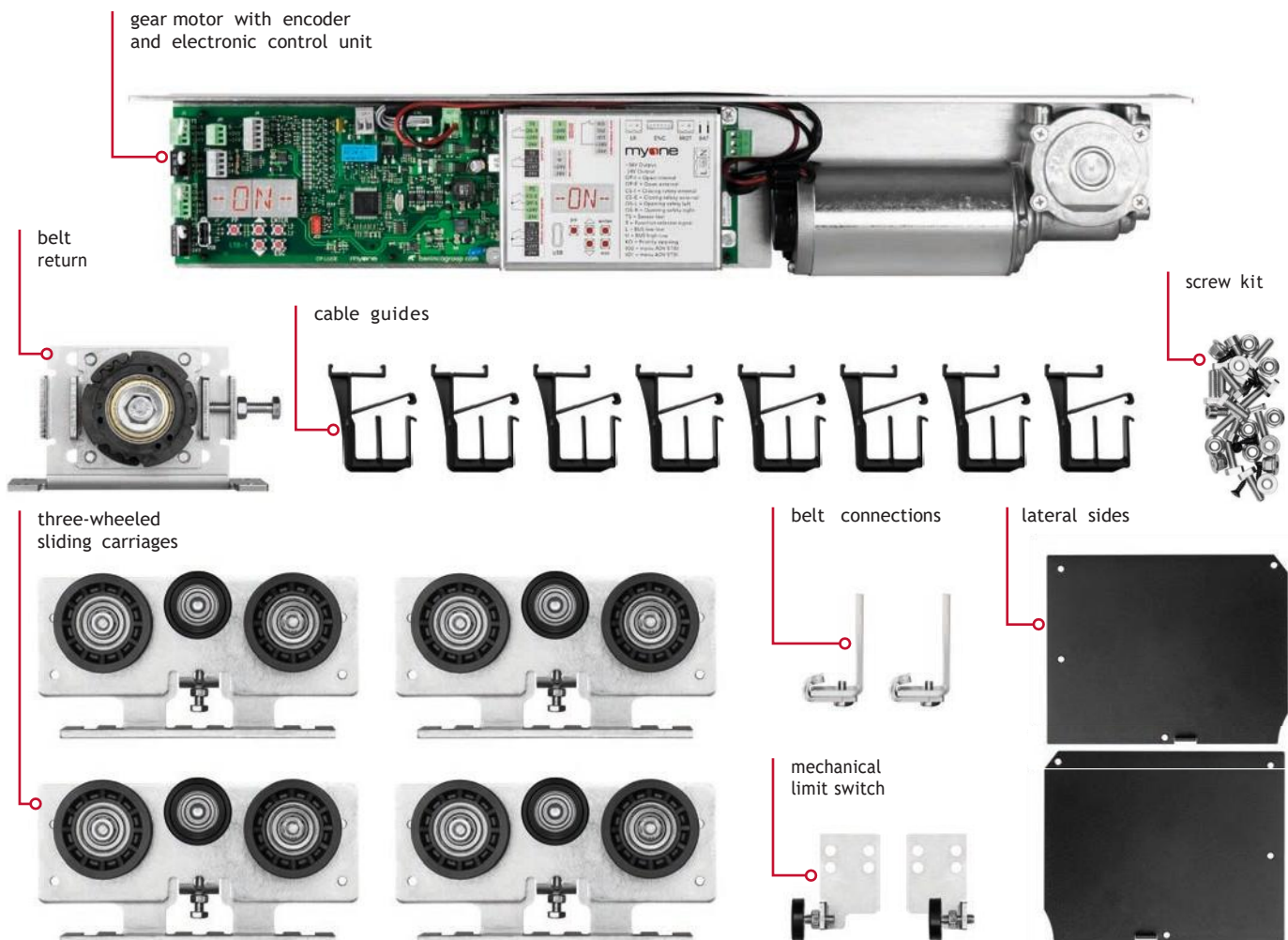
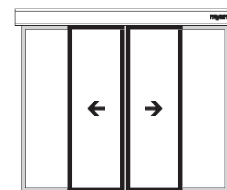
LUCE LIGHT - accessories to complete the kit

- | | | | | | |
|--|---|--|---|-----------------------------------|------------------------------------|
| | | | | | |
| 01AL0021
Raw aluminium supporting profile with anodised sliding guide and gasket.
- L. 4,2 m
- 2,95 kg/m | 01AL0006
Anodised aluminium cover.
- L. 4.2 m
- 1.52 kg/m | 01AL0022
Raw aluminium supporting profile with anodised sliding guide and gasket.
- L. 6,5 m
- 2,95 kg/m | 01AL0023
Anodised aluminium cover.
- L. 6.5 m
- 1.52 kg/m | 32CG0004
Belt.
- 1 m | 32CG0001
Belt.
- 50 m |



kit for doors
with two sliding leaves

LUCEH4202F LIGHT



LUCE LIGHT - accessories to complete the kit



01AL0021
Raw aluminium supporting profile with anodised sliding guide and gasket.
- L. 4,2 m
- 2,95 kg/m



01AL0006
Anodised aluminium cover.
- L. 4.2 m
- 1.52 kg/m



01AL0022
Raw aluminium supporting profile with anodised sliding guide and gasket.
- L. 6,5 m
- 2,95 kg/m



01AL0023
Anodised aluminium cover.
- L. 6.5 m
- 1.52 kg/m



32CG0004
Belt.
- 1 m



32CG0001
Belt.
- 50 m



discover the Beninca frame range

www.beninca.vn

framed door accessories - commercial frame



01AL0030 - 1000 mm
01AL0031 - 1500 mm
01AL0032 - 2000 mm

Aluminium floor guide for one leaf.



01FE0018

Floor guide slider.



01AL0008 - 1000 mm
01AL0009 - 1500 mm
01AL0010 - 2000 mm

Standard leaf fastening device complete with fixing brackets for the carriage.

glass door accessories - fastening set for glass leaves with pre-drilled holes



99AC0004

Fastening set for glass leaf (10-12 mm) with pre-drilled holes.
- L. 1000 mm



99AC0005

Fastening set for glass leaf (10-12 mm) with pre-drilled holes.
- L. 1500 mm



99AC0006

Fastening set for glass leaf (10-12 mm) with pre-drilled holes.
- L. 2000 mm



01FE0049

Glass door slider.
- 6 piece pack



01FE0050

Glass door stainless steel slider.

glass door accessories - fastening clamp set for glass leaves



99AC0001

Fastening clamp set for glass leaf (10-12 mm thickness).
- L. 1000 mm



99AC0002

Fastening clamp set for glass leaf (10-12 mm thickness).
- L. 1500 mm



99AC0003

Fastening clamp set for glass leaf (10-12 mm thickness).
- L. 2000 mm



01FE0049

Glass door slider.
- 6 piece pack



01FE0050

Glass door stainless steel slider.



accessories



99BA0003
Emergency battery kit with wiring and bracket.



99EB0001
Electromechanical lock kit with release cord.



99EB0003
Emergency electromechanical lock kit with release cord.



99EB0006
Electromechanical lock kit for return with release cord.

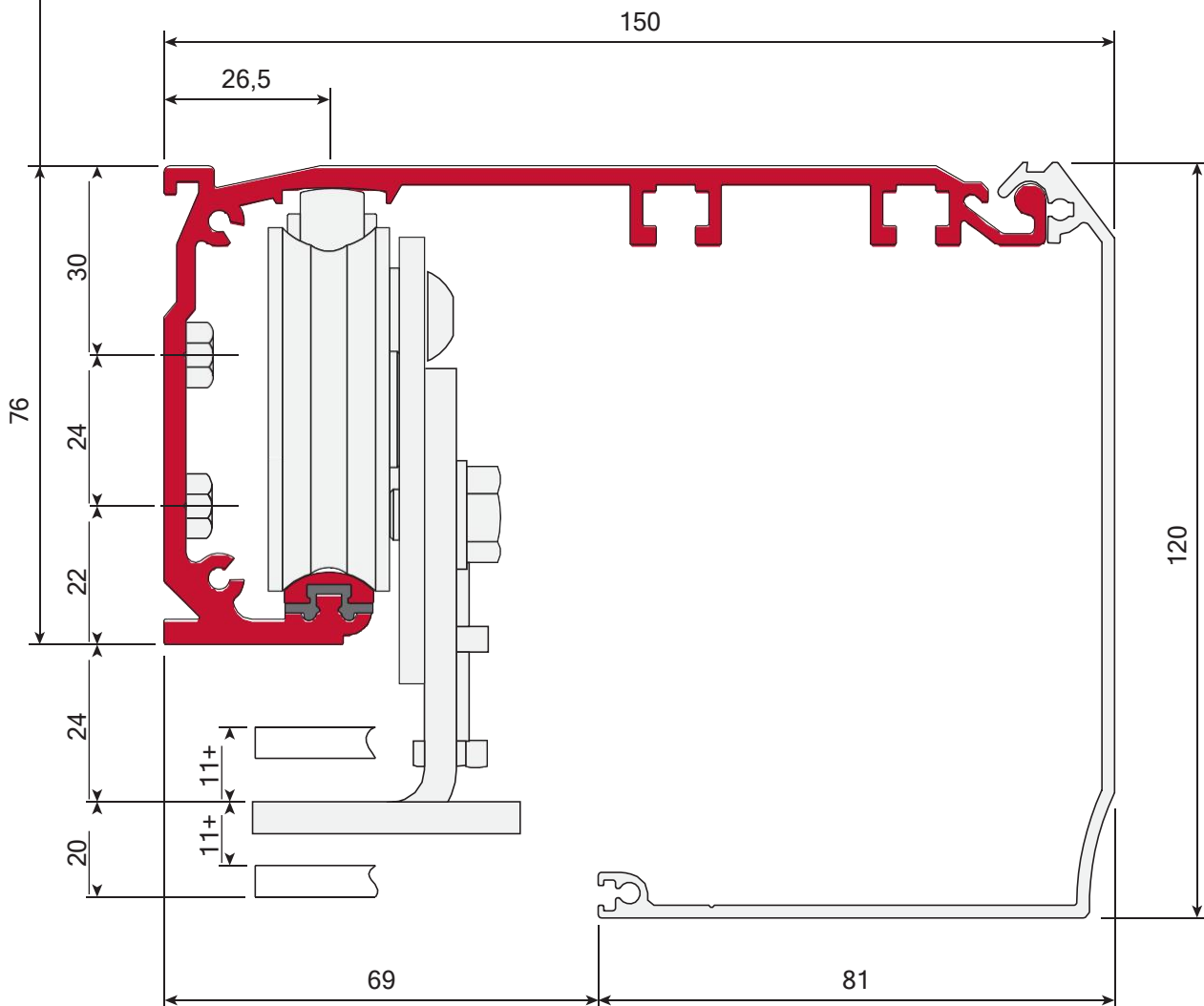


99AE0001
Opening device with elastic.



01FE0059
Safe for external release.

operator cross-section technical drawing

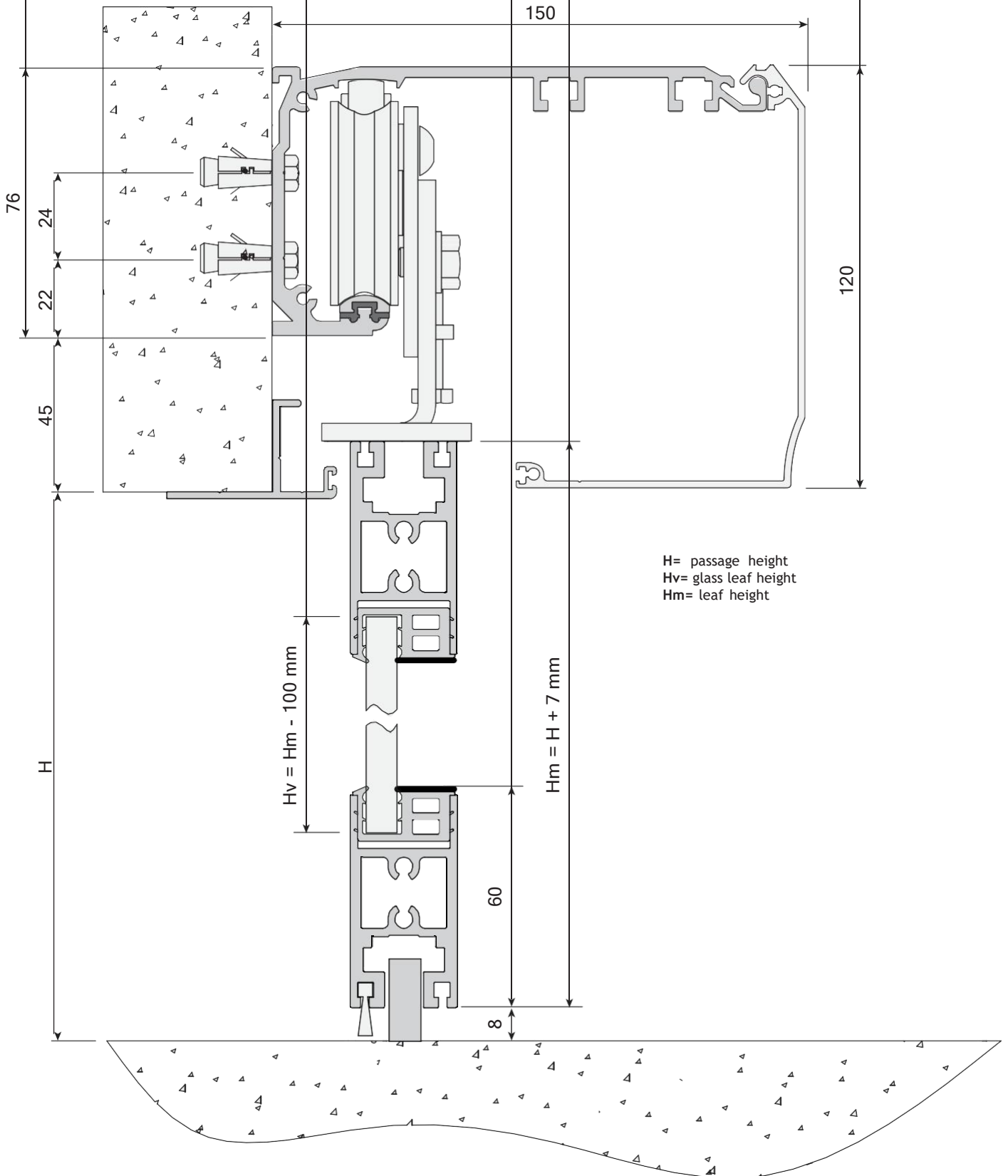




standard sliding doors

LUCE LIGHT

entrance with M30 beninca frame



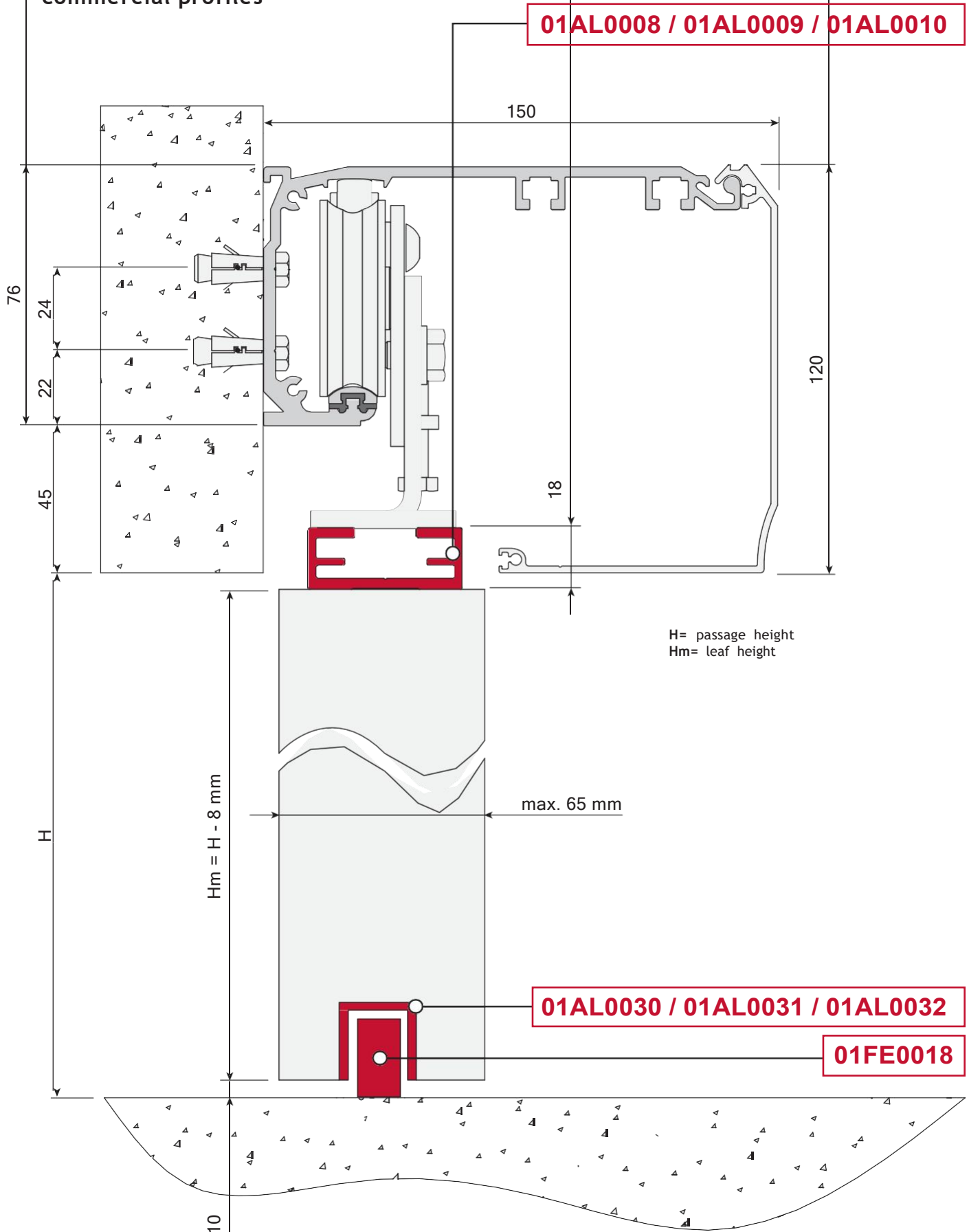
H= passage height
 H_v= glass leaf height
 H_m= leaf height

LUCE LIGHT

standard sliding doors



entrance with commercial profiles



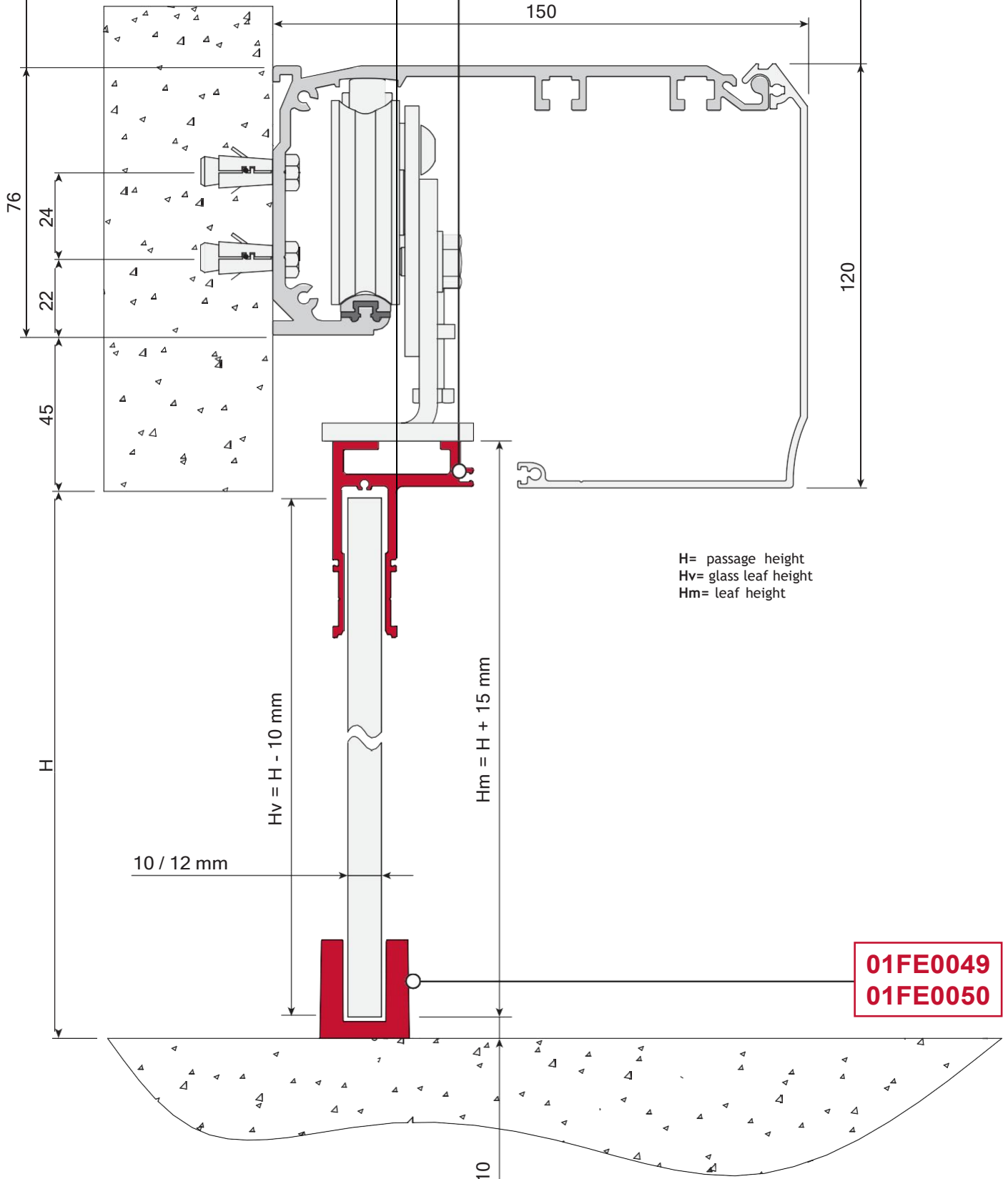


standard sliding doors

LUCE LIGHT

entrance with fastening set
for glass leaf with pre-drilled holes

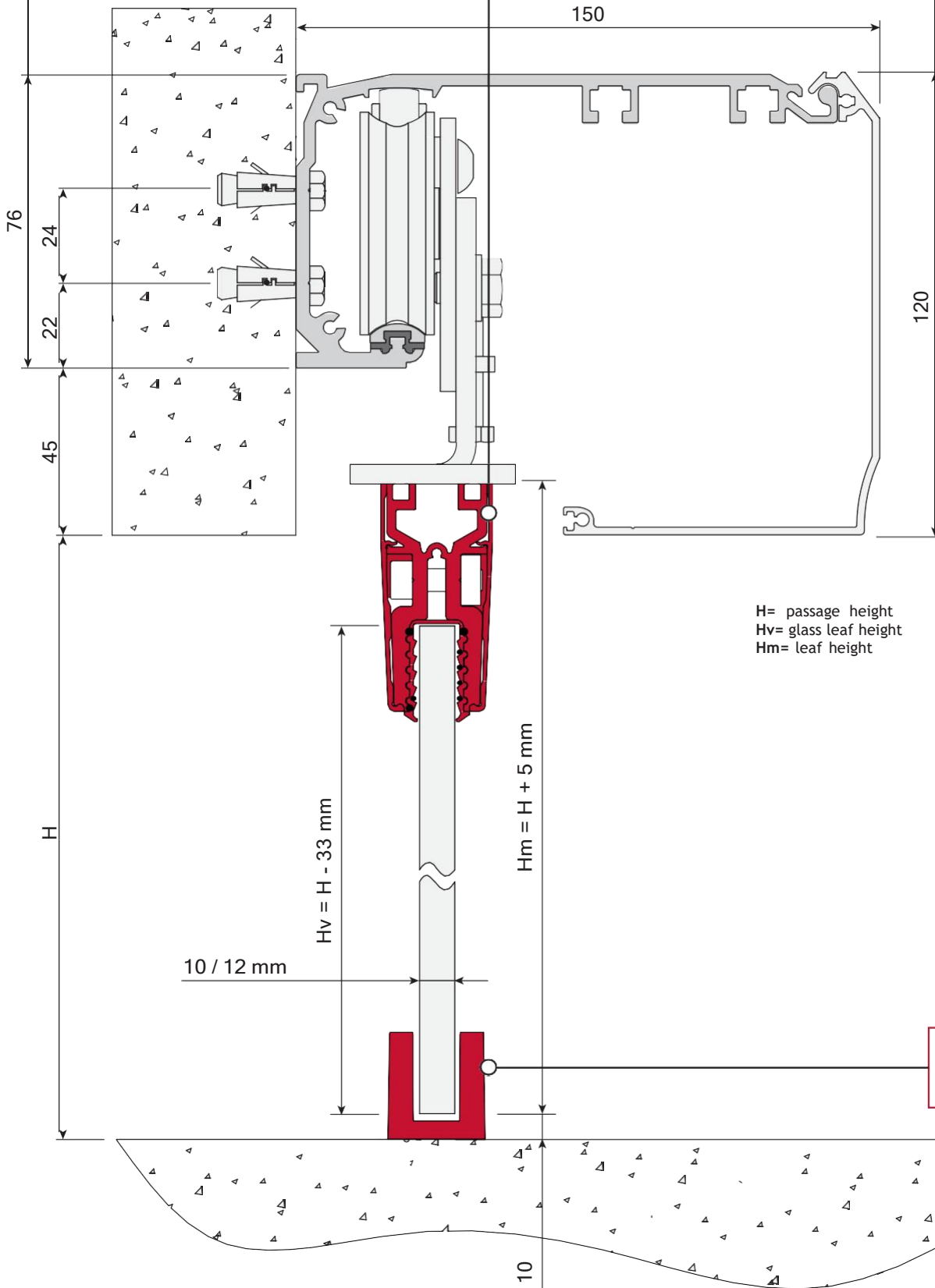
99AC0004 / 99AC0005 / 99AC0006





entrance with fastening set
for glass leaf to clamp

99AC0001 / 99AC0002 / 99AC0003



H= passage height
Hv= glass leaf height
Hm= leaf height

01FE0049
01FE0050



BENINCA

Via Abbate Tommaso, 52
30020 Quarto D'Altino (VE) ITALY

T +39 0422 824384

info@benincagroup.com
www.beninca.vn